



Persian J. Acarol., 2024, Vol. 13, No. 4, pp. 733–743.
<https://doi.org/10.22073/pja.v13i4.85922>
Journal homepage: <http://www.biotaxa.org/pja>



<http://zoobank.org/urn:lsid:zoobank.org:pub:2B204F1B-9E51-4A83-93BC-1CFA7AAC0FFB>

Article

Oribatid mites (Acari, Oribatida) of Saona Island, Dominican Republic

Sergey G. Ermilov 

University of Tyumen, Institute of Environmental and Agricultural Biology (X-BIO), Tyumen, Russia; E-mail: ermilov.acari@yandex.ru

ABSTRACT

Thirty-four species of oribatid mites (Oribatida), belonging to 29 genera and 14 families, were collected from Saona Island, Southeast Dominican Republic. A new species of the genus *Pergalumna*—*P. (Pergalumna) saonaensis* sp. nov.—is described from leaf litter of the mixed forest.

KEYWORDS: fauna, morphology, Neotropical region, new record, *Pergalumna*, taxonomy.

PAPER INFO.: Received: 14 July 2024, Accepted by: *O. Joharchi*, 15 August 2024, Published: 15 October 2024

INTRODUCTION

Oribatid mites (Acari, Oribatida) of the Dominican Republic are poorly studied; only several species were reported (e.g., Higgins 1966; Hammer 1969; Mahunka 1978; Niedbała 2004; Perez-Gelabert 2008; Subías and Shtanchaeva 2021; Pflingstl *et al.* 2021, 2023; Niedbała *et al.* 2023). The present study is based on material collected from Saona Island located off the south-east coast in the Dominican Republic. The main goals of our paper are: to present a list of all identified taxa and to describe one new species belonging to the nominate subgenus of the genus *Pergalumna* Grandjean 1936 (Galumnidae).

The genus *Pergalumna* was proposed by Grandjean (1936), with *Oribata nervosa* Berlese, 1914 as type species. The nominate subgenus comprises about 190 species (Subías 2022, online version 2024; Ermilov 2024) having a cosmopolitan distribution collectively (Subías 2022, online version 2024). The generic and subgeneric diagnoses were revised by Ermilov and Klimov (2017). An identification key to the Neotropical species of *Pergalumna* has been presented initially by Ermilov *et al.* (2014b) and revised by Ermilov and Starý (2021). Prior this study, *Pergalumna* was not recorded in the Dominican Republic.

MATERIAL AND METHODS

Material – Location: Dominican Republic, 18° 09' N, 68° 41' W, La Altagracia Province, Saona Island (located off the south-east coast in the country), leaf litter in the mixed forest (data and collector unknown; collection of the University of Tyumen Museum of Zoology, Tyumen, Russia). All specimens (except the type material) are in the personal collection (preserved in 70% solution of ethanol with a drop of glycerol) of the author.

How to cite: Ermilov, S.G. (2024) Oribatid mites (Acari, Oribatida) of Saona Island, Dominican Republic. *Persian Journal of Acarology*, 13(4): 733–743.

Observation and documentation – For measurement and illustration, specimens were mounted in lactic acid on temporary cavity slides. Body length was measured in lateral view, from the tip of the rostrum to the posterior edge of the notogaster; notogastral width refers to the maximum width of the notogaster (behind pteromorphs) in dorsal view; lengths of body setae were measured in lateral aspect; all body measurements are presented in micrometers (μm). Formulas for leg setation are given in parentheses according to the sequence trochanter-femur-genu-tibia-tarsus (famulus included); formulas for leg solenidia are given in square brackets, according to the sequence genu-tibia-tarsus. Drawings were made with a camera lucida using a Leica DM 2500 transmission light microscope.

Terminology – Morphological terminology used in this paper mostly follows that of Grandjean (1956, 1957), Norton and Ermilov (2017); also, Ermilov and Klimov (2017) for overview.

Abbreviations – *Prodorsum*: *L* = lamellar line; *S* = sublamellar line; *N* = prodorsal leg niche; *E*, *T* = lateral ridges of body; *ro*, *le*, *in*, *bs* = rostral, lamellar, interlamellar, and bothridial setae, respectively; *Ad* = dorsosejugal porose area; *D* = dorsophragma; *P* = pleurophragma. *Notogaster*: *Aa*, *A1*, *A2*, *A3* = porose areas; *c*, *la*, *lm*, *lp*, *h*, *p* = setal alveoli; *ia*, *im*, *ip*, *ih*, *ips* = lyrifissures; *gla* = opisthonotal gland opening. *Gnathosoma*: *a*, *m*, *h* = subcapitular setae; *or* = adoral seta; *sup*, *inf*, *d*, *l*, *cm*, *acm*, *ul*, *su*, *vt*, *lt* = palp setae; ω = palp solenidium; *as* = axillary saccule; *cha*, *chb* = cheliceral setae; *Tg* = Trägårdh's organ. *Epimeral and lateral podosomal regions*: *1a*, *3b*, *3c*, *4a*, *4b*, *4c* = epimeral setae; *PdI*, *PdII* = pedotecta I, II, respectively; *dis* = discidium; *cir* = circumpedial carina. *Anogenital region*: *g*, *ag*, *an*, *ad* = genital, aggenital, anal, and adanal setae, respectively; *iad* = adanal lyrifissure; *Ap* = postanal porose area; ψ , τ = setae of blade of ovipositor; *k* = coronal seta of ovipositor; *po* = preanal organ. *Legs*: *Tr*, *Fe*, *Ge*, *Ti*, *Ta* = trochanter, femur, genu, tibia, and tarsus, respectively; *t* = tooth; ω , φ , σ = solenidia; ε = famulus; *d*, *l*, *v*, *bv*, *ev*, *ft*, *tc*, *it*, *p*, *u*, *a*, *s*, *pv*, *pl* = setae; *pa* = porose area.

Notes – References to the original descriptions of taxa in the *List of taxa* section are not included in the References section.

LIST OF TAXA

Distribution mostly from Subías (2022, online version 2024). Data on ptyctimous mites have been presented by Niedbała *et al.* (2023).

Hypochthoniidae

Eohypochthonius gracilis (Jacot, 1936): 10 ex. Distribution: Tropical and Subtropical regions.
Malacoangelia remigera Berlese, 1913: 1 ex. Distribution: Tropical and Subtropical regions.

Lohmanniidae

Haplacarus foliatus Wallwork, 1962: 1 ex. Distribution: Tropical region.
Lohmannia jornoti Mahunka, 1985: 1 ex. Distribution: Neotropical region.
Meristacarus longisetosus Mahunka, 1978: 13 ex. Distribution: Neotropical region.

Trhypochthoniidae

Afronothrus incisivus Wallwork, 1961: 13 ex. Distribution: Tropical region.
Allonothrus tuxtlasensis Palacios-Vargas & Iglesias, 1997: 16 ex. Distribution: Neotropical region.
Archegozetes magnus (Sellnick, 1925): 40 ex. Distribution: Tropical and Subtropical regions.

Hermanniellidae

Sacculobates horologiorum Grandjean, 1962: 3 ex. Distribution: Neotropical region.

Eremulidae

Eremulus flagellifer Berlese, 1908: 4 ex. Distribution: Cosmopolitan.

Damaeolidae

Fosseremus laciniatus (Berlese, 1905): 1 ex. Distribution: Cosmopolitan.

Oppiidae

Acropia curvispina (Mahunka, 1983): 1 ex. Distribution: Neotropical region.

Aeropia maldivesensis Ermilov & Joharchi, 2022: ex. Distribution: Maldives, Cuba.

Multioppia insularis Mahunka, 1985: 4 ex. Distribution: Neotropical region.

Multioppia wilsoni Aoki, 1964: 1 ex. Distribution: Holarctic and Neotropical regions.

Pseudoamerioppia barrancensis (Hammer, 1961): 25 ex. Distribution: Neotropical region, Philippines, western Africa, Canary Islands.

Ramusella curtipilus Hammer, 1971: 1 ex. Distribution: Tropical and southern Palaearctic regions.

Striatoppia opuntiseta Balogh & Mahunka, 1968: 4 ex. Distribution: Tropical region, Japan.

Suctobelbidae

Suctobelbella (Flagrosuctobelba) peracuta (Balogh & Mahunka, 1980): 42 ex. Distribution: Neotropical region, South Africa.

Suctobelbella (Flagrosuctobelba) subtrigona (Oudemans, 1900): 3 ex. Distribution: Holarctic region, Mexico, Vietnam.

Suctobelbella (Ussuribata) variosetosa (Hammer, 1961): 1 ex. Distribution: Tropical region.

Tectocephidae

Tectocephus sarekensis Trägårdh, 1910: 1 ex. Distribution: Cosmopolitan.

Tegezozetes tunicatus Berlese, 1913: 7 ex. Distribution: Tropical region, Hungary.

Microzetidae

Berlesezetes ornatissimus (Berlese, 1913): 6 ex. Distribution: Tropical and Subtropical regions.

Punctoribatidae

Lamellobates molecula (Berlese, 1916): 12 ex. Distribution: Tropical and Subtropical regions.

Scheloribatidae

Muliercula cf. *ornamenta* Ermilov, 2024: 19 ex. Distribution: Cuba. **Remarks.** The specimens from the Dominican Republic are completely similar to the Cuban specimens from the original description (Ermilov & Tolstikov 2024) except surface of the interlamellar region (mostly lineolate versus foveolate). Tentatively, I consider this to be morphological variation among geographically distant populations.

Scheloribates elegans Hammer, 1958: 2 ex. Distribution: Tropical region.

Scheloribates praeincisus (Berlese, 1910): 12 ex. Distribution: Oriental, Australasian, Afrotropical, Neotropical, and Southern Holarctic regions.

Haplozetidae

Protoribates paracapucinus (Mahunka, 1988): 9 ex. Distribution: Tropical and Subtropical regions.

Rostrozetes ovulum (Berlese, 1908): 7 ex. Distribution: Tropical and Subtropical regions.

Galumnidae

Carinogalumna genavensium (Mahunka, 1998): 3 ex. Distribution: Neotropical region.
Galumna flabellifera Hammer, 1958: 7 ex. Distribution: Tropical and Subtropical regions.
Pergalumna bifissurata Hammer, 1972: 38 ex. Distribution: Tahiti, Neotropical region.
Pergalumna saonaensis **sp. nov.**: 10 ex.

The list includes 34 species belonging to 29 genera and 14 families. Except three species (*Meristacarus longisetosus*, *Archegozetes magnus*, *Scheloribates praeincisus*), six genera (*Meristacarus*, *Archegozetes*, *Aeroppia*, *Multioppia*, *Striatoppia*, *Scheloribates*) and four families (Lohmanniidae, Trhypochthoniidae, Oppiidae, Scheloribatidae), the other taxa are recorded in the Dominican Republic for the first time (see Higgins 1966; Mahunka 1978; Subías & Shtanchaeva 2021). One species (new species) is known only from the Dominican Republic, eight species are Neotropical and 25 (including three Cosmopolitan species) have broad distributions (more than one geographical region).

TAXONOMY

Family Galumnidae

Pergalumna Grandjean, 1936

Subgenus *Pergalumna* (*Pergalumna*) Grandjean, 1936

Type species: *Oribata nervosa* Berlese, 1914

Pergalumna (*Pergalumna*) *saonaensis* **sp. nov.** (Figs. 1–15)

<http://zoobank.org/urn:lsid:zoobank.org:act:FD739146-CA13-4FBD-A54C-2B52D2D53808>

Type material

Holotype (female) and nine paratypes (five males and four females): Dominican Republic, 18° 09' N, 68° 41' W, La Altagracia Province, Saona Island, leaf litter in the mixed forest (data and collector unknown; collection of the University Tyumen, Museum of Zoology, Tyumen, Russia).

Type deposition

The holotype is deposited in the collection of the Senckenberg Museum of Natural History, Görlitz, Germany; nine paratypes are in the collection of the University of Tyumen, Museum of Zoology, Tyumen, Russia. All specimens are preserved in 70% solution of ethanol with a drop of glycerol.

Diagnosis

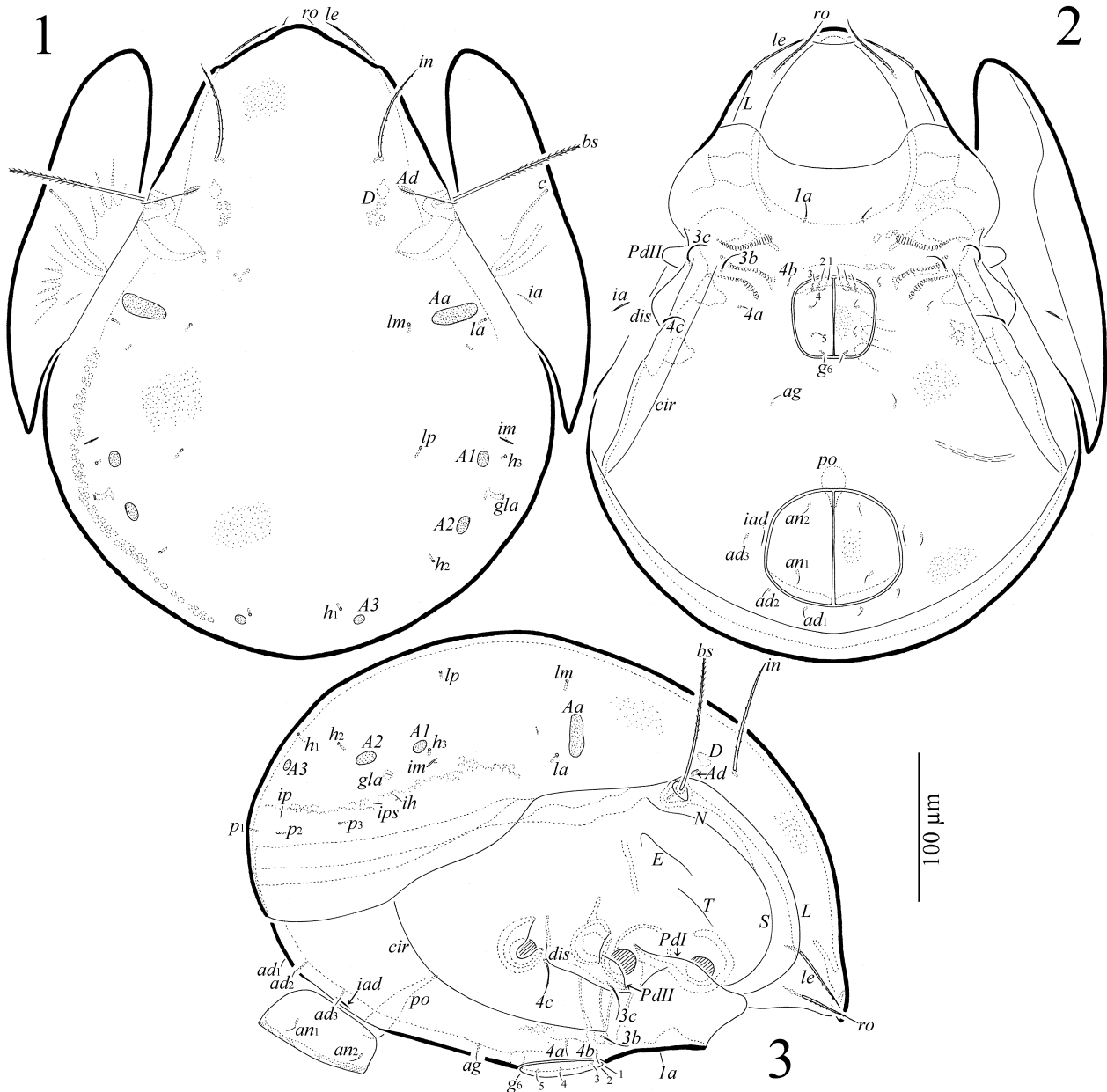
Body length: 405–465. Body surface densely microgranulate. Rostrum with two incisions. Rostral, lamellar and interlamellar setae long, setiform, barbed; relative length: $in > le = ro$; bothridial seta longest seta on prodorsum, setiform, rigid, heavily barbed in mediolateral part, directed laterad. Dorsosejugal porose area present. Dorsosejugal suture interrupted medially. Four pairs of porose areas in typical case; *Aa* elongate oval or oval, transversely oriented, located close and anteromedially to *la* and distanced from *lp*; *A1*, *A2* rounded or oval; *A1* located anterolaterally to *A2*; *A3* rounded; occasionally, porose areas *A1* and *A2* fused into one elongate oval porose area. Median pore absent. Opisthonotal gland opening posterolaterally to *A1*; lyrifissure *im* anterolaterally to *A1*. Epimeral and anogenital setae comparatively short. Circumpedial carina medium-sized. Postanal porose area absent or minute. Leg tibia IV with small dorsal tooth posteriorly to insertion of solenidion; famulus slightly curved mediolaterally, directed forwards, inserted between seta *ft*'' and solenidion ω_2 ; solenidion of

tibia IV inserted in posterior part of segment.

Description

Measurements – Body length: 450 (holotype), 405–450 (male paratypes); 450–465 (female paratypes); notogaster width: 345 (holotype), 315–337 (male paratypes); 337–345 (female paratypes).

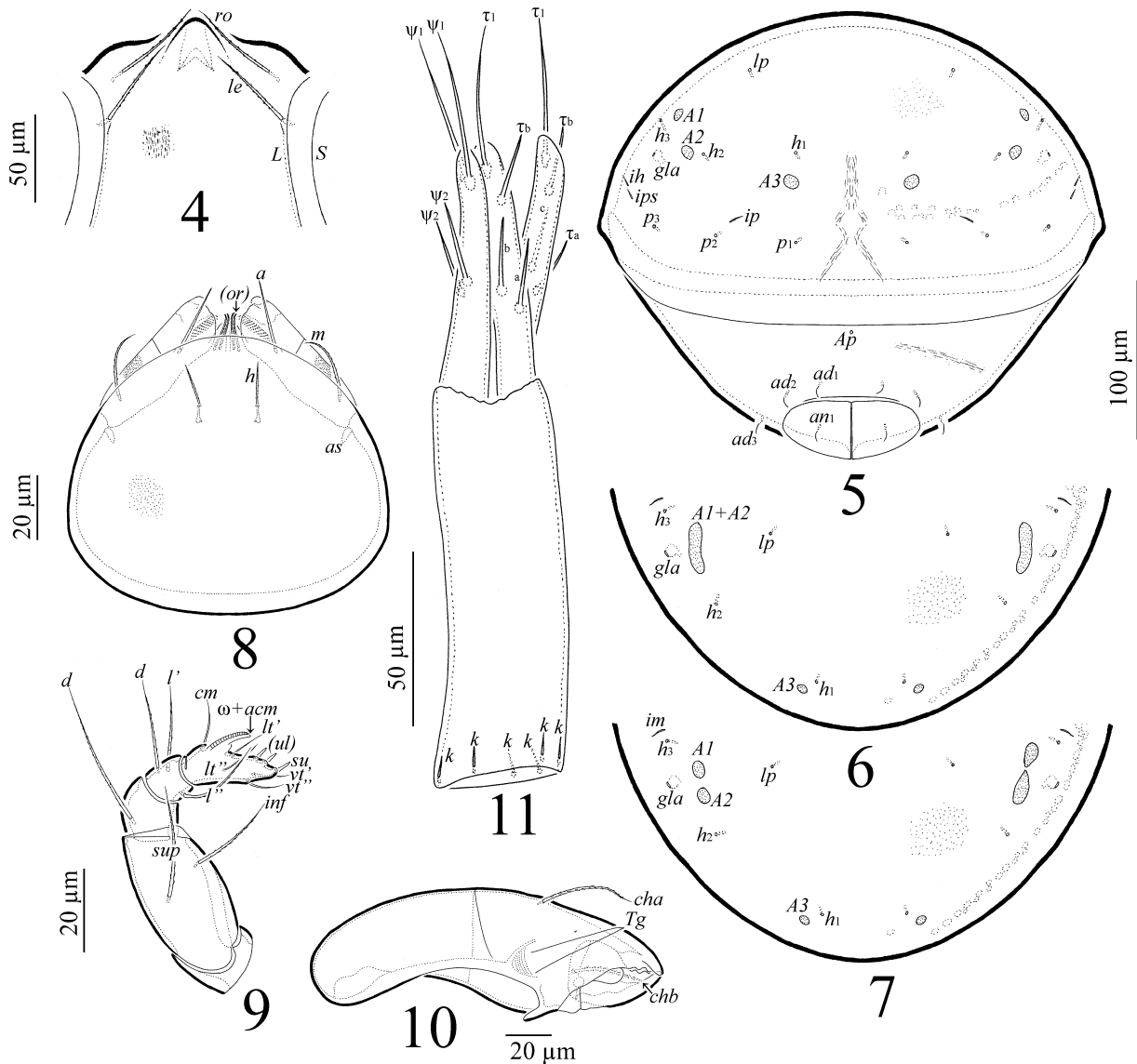
Integument – Body color brown. Body surface densely microgranulate; additionally, prodorsum and epimere I with partially dense short poorly observable stria. Anogenital region and posterior part of notogaster with poorly observable striate bands.



Figures 1–3. *Pergalumna (Pergalumna) saonaensis* sp. nov. (adult) – 1. Dorsal view; 2. Ventral view (gnathosoma, legs and right pteromorph not shown); 3. Right lateral view (gnathosoma, legs and right pteromorph not shown).

Prodorsum – Rostrum with two narrow, oblique incisions; rostral parts tightly connected to each other, therefore, incisions poorly observable in non-dissected specimens. Lamellar and sublamellar

lines thin, parallel, curving backwards mediolaterally; mediobasal part of *L* thickened; *S* thin. Rostral (52–60), lamellar (52–60) and interlamellar (75–82) setae setiform, barbed; *in* erect; insertion of *le* close to *L*; bothridial seta (97–109) setiform, rigid, heavily barbed in mediolateral part, directed laterad (in dorsal aspect). Dorsosejugal porose area oval (15–17 × 7–9), located posterolaterally to insertion of *in*. Dorsophragma elongate longitudinally.

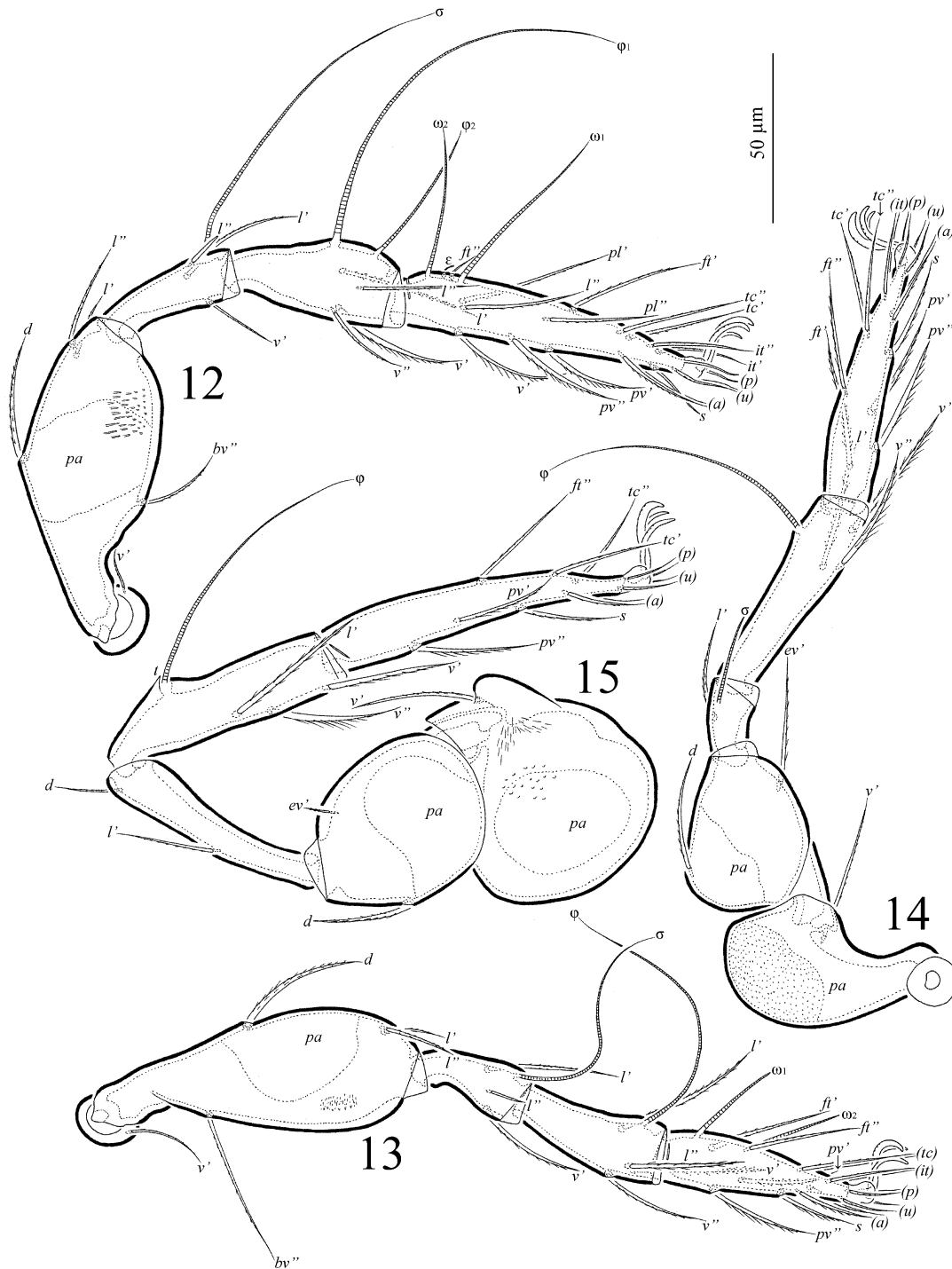


Figures 4–11. *Pergalumna (Pergalumna) saonaensis* sp. nov. (adult) – 4. Anterior view of prodorsum, dorsoanterior view; 5. Posterior view; 6, 7. Posterior part of notogaster, dorsal view; 8. Subcapitulum, ventral view; 9. Palp, right, antiaxial view; 10. Chelicera, left, paraxial view; 11. Ovipositor, lateral view.

Notogaster – Dorsosejugal suture interrupted medially. All notogastral setae represented by setal alveoli. Four pairs of porose areas developed in typical case: *Aa* elongate oval (32–37 × 9–15) or oval (22 × 15), transversely oriented; *A1*, *A2* rounded (11–19) or oval (22–26 × 11–19); *A3* rounded (11 × 19); occasionally (sometimes asymmetrically), porose areas *A1* and *A2* fused into one elongate oval porose area (34–41 × 11–19); *Aa* slightly distanced from pteromorph hinge, located close and anteromedially to *la* and distanced from *lp*; *A1* in lateral position on notogaster, located anterolaterally

to A2, distance A1–A1 larger than A2–A2. Median pore absent in males and females. Opisthotal gland opening and all lyrifissures distinct: *gla* located posterolaterally to A1; *im* anterolaterally to A1; *ip* anteriorly or anteromedially to *p*₁; *ih* and *ips* close to each other, anteriorly to *p*₃.

Gnathosoma – Size of subcapitulum: 105–112 × 90–101; subcapitular seta *a* (24–26) setiform, roughened; *m* (24–26), *h* (15–19) as well as both adoral setae (11–13) setiform, barbed. Length of palp: 79–86; setation: 0–2–1–3–9(+ω); postpalpal seta (7) spiniform, smooth. Length of chelicera: 154–157; setae (*cha*: 45–49; *chb*: 30–34) setiform, barbed.



Figures 12–15. *Pergalumna (Pergalumna) saonaensis* sp. nov. (adult) – 12. Leg I, right, antiaxial view; 13. Leg II, right, antiaxial view; 14. Leg III, right, paraxial view; 15. Leg IV, left, antiaxial view.

Epimeral and lateral podosomal regions – Epimeral setal formula: 1–0–2–3; setae *4a*, *4b* (7–9), *1a* (11–13) setiform, slightly roughened; *3b* (19–26), *3c*, *4c* (26–34) setiform, slightly barbed. Circumpedial carina medium-sized, directed slightly laterally to insertion of seta *3b*.

Anogenital region – Anogenital formula: 6–1–2–3; genital (g_1 : 11; g_2 : 7–11; others: 7–9), aggenital (7–9), anal (7–9), and adanal (7–9) setae setiform, slightly roughened; anterior edge of genital plate with three setae; aggenital seta located between genital and anal apertures, closer to the former; adanal setae ad_1 and ad_2 posteriorly, ad_3 laterally to anal plate; distance ad_1 – ad_2 slightly shorter than ad_2 – ad_3 . Adanal lyrifissure located close and parallel to the middle of anal plate. Postanal porose area absent or represented by small (1–4), rounded, poorly observable. Ovipositor size: 188–198 × 36–41; length of blade: 79–86; length of distal section (beyond middle fold): 109–112; each of the three blades with four smooth setae: $\psi_1 \approx \tau_1$ (37–41) rod-like; $\psi_2 \approx \tau_a \approx \tau_b \approx \tau_c$ (19–22) and six coronal setae (7) thinly thorn-like.

Legs – Median claw distinctly thicker than lateral claws; all claws slightly barbed on dorsal side. Tibia IV with small dorsal tooth located close and posteriorly to insertion of solenidion. Porose area on femora I–IV and on trochanters III, IV distinct; proximoventral porose area on all tarsi and distoventral porose area on all tibiae not observable. Formulas of leg setation and solenidia: I (1–4–3–4–20) [1–2–2], II (1–4–3–4–15) [1–1–2], III (1–2–1–3–15) [1–1–0], IV (1–2–2–3–12) [0–1–0]; homology of setae and solenidia indicated in Table 1; famulus slightly curved mediodistally, directed forwards, inserted between seta ft'' and solenidion ω_2 ; solenidion of tibia IV inserted in posterior part of segment.

Table 1. Leg setation and solenidia of adult *Pergalumna* (*Pergalumna*) *saonaensis* sp. nov.

Leg	Tr	Fe	Ge	Ti	Ta
I	v'	$d, (l), bv''$	$(l), v', \sigma$	$(l), (v), \phi_1, \phi_2$	$(ft), (tc), (it), (p), (u), (a), s, (pv), v', (pl), l'', \varepsilon, \omega_1, \omega_2$
II	v'	$d, (l), bv''$	$(l), v', \sigma$	$(l), (v), \phi$	$(ft), (tc), (it), (p), (u), (a), s, (pv), \omega_1, \omega_2$
III	v'	d, ev'	l', σ	$l', (v), \phi$	$(ft), (tc), (it), (p), (u), (a), s, (pv)$
IV	v'	d, ev'	d, l'	$l', (v), \phi$	$ft'', (tc), (p), (u), (a), s, (pv)$

Note: Roman letters refer to normal setae; Greek letters to solenidia (except ε = famulus); single quotation mark (') designates setae on the anterior and double quotation mark (') setae on the posterior side of a given leg segment; parentheses refer to a pair of setae.

Comparison

Pergalumna (*Pergalumna*) *saonaensis* sp. nov. is most similar to *P. (P.) pauliensis* Pérez-Íñigo & Baggio, 1991 from Mexico (see Pérez-Íñigo & Baggio 1991) in the following main traits: body surface without heavy sculpturing or ornamentation; rostrum without tooth; rostral region without longitudinal ridge; bothridial seta long, setiform; interlamellar seta long; dorsosejugal suture interrupted medially; four pairs of notogastral porose areas; median pore absent. However, the new species differs from the latter by the following traits: rostrum with two incisions (versus narrowly rounded); bothridial seta heavily barbed in mediodistal part, directed lateral (versus shortly ciliate unilaterally, directed posterolaterad); notogastral porose area *Aa* located close and anteromedially to setal alveolus *la* and distanced from *lp* (versus between *la* and *lm* and equally distanced from them); *A1* in lateral position on notogaster, located anterolaterally to *A2* (versus in dorsal position on notogaster, located anteromedially to *A2*).

Also, specimens of *P. (P.) saonaensis* sp. nov. having three pairs of notogastral porose areas (if *A1* and *A2* fused into one elongate oval porose area) is most similar to *P. (P.) sura* P. Balogh, 1997 (see P. Balogh 1997) and *P. (P.) plumata* Pérez-Íñigo & Baggio, 1986 (see Pérez-Íñigo & Baggio 1986; Ermilov *et al.* 2014a) from the Neotropical region in the following main traits: body surface without heavy sculpturing or ornamentation; rostrum without tooth; rostral region without

longitudinal ridge; bothridial seta long, setiform; interlamellar seta long; dorsosejugal suture interrupted medially; three pairs of notogastral porose areas, with *Aa* elongate oval, transversely oriented; median pore absent. However, the new species differs from both by the morphology and directions of the bothridial seta (heavily barbed in mediodistal part, directed lateral versus shortly ciliate unilaterally, directed posterolaterad) and the location of the notogastral porose area *Aa* (close and anteromedially to setal alveolus *la* and distanced from *lp* versus between *la* and *lm* and equally distanced from them).

Etymology

The species name *saonaensis* refers to the place of origin, Saona Island.

ACKNOWLEDGEMENTS

I cordially thank two anonymous reviewers for valuable comments. This study was supported by the Ministry of Science and Higher Education of the Russian Federation within the framework of the Carbon Measurement Test Area in Tyumen' Region (FEWZ-2024-0016).

REFERENCES

- Balogh, P. (1997) New species of oribatids (Acari) from the Neotropical region. *Opuscula Zoologica Budapest*, 29–30: 21–30.
- Berlese, A. (1914) Acari nuovi. Manipulus IX. *Redia*, 10: 113–150.
- Ermilov, S.G. (2024) New species of *Pergalumna* (Acari, Oribatida, Galumnidae) from Venezuela. *Systematic and Applied Acarology*, 29: 678–685. DOI: [10.11158/saa.29.6.3](https://doi.org/10.11158/saa.29.6.3)
- Ermilov, S.G. & Klimov, P.B. (2017) Generic revision of the large-winged mite superfamily Galumnoidea (Acari, Oribatida) of the world. *Zootaxa*, 4357: 1–72. DOI: [10.11646/zootaxa.4357.1.1](https://doi.org/10.11646/zootaxa.4357.1.1)
- Ermilov, S.G. & Starý, J. (2021) A new species of *Pergalumna* (Acari, Oribatida, Galumnidae) from Bolivia, with updated identification key to known species of the genus from the Neotropical region. *Systematic and Applied Acarology*, 26: 1097–1108. DOI: [10.11158/saa.26.6.7](https://doi.org/10.11158/saa.26.6.7)
- Ermilov, S.G. & Tolstikov, A.V. (2024) New species and new records of oribatid mites (Acari, Oribatida) from Villa Clara, Cuba. *Zoologicheskyy Zhurnal* (Accepted).
- Ermilov, S.G., Alvarado-Rodríguez, O. & Retana-Salazar, A. (2014a) Contribution to the knowledge of Costa Rican oribatid mite fauna, with supplementary descriptions of *Pergalumna silvatica* and *P. sura* (Acari: Oribatida Galumnidae). *Systematic and Applied Acarology*, 19: 216–222. DOI: [10.11158/saa.19.2.12](https://doi.org/10.11158/saa.19.2.12)
- Ermilov, S.G., Alvarado-Rodríguez, O. & Retana-Salazar, A.P. (2014b) Two new species of *Pergalumna* (Acari, Oribatida, Galumnidae) from Costa Rica, including a key to all species of the genus from the Neotropical region. *ZooKeys*, 435: 7–23. DOI: [10.3897/zookeys.435.8213](https://doi.org/10.3897/zookeys.435.8213)
- Grandjean, F. (1936) Les Oribates de Jean Frédéric Hermann et de son père. *Annales de la Société Entomologique de France*, 105: 27–110.
- Grandjean, F. (1956) Galumnidae sans carènes lamellaires (Acariens, Oribates). 1^{re} série. *Bulletin de la Société Zoologique de France*, 81: 134–150.
- Grandjean, F. (1957) Galumnidae sans carènes lamellaires (Acariens, Oribates). 2^e série. *Bulletin de la Société Zoologique de France*, 82: 57–71.
- Hammer, M. (1969) Oribatids found at plant quarantine stations in U.S.A. *Videnskabelige*

Meddelelser fra Dansk naturhistorisk Forening i Kjøbenhavn, 132: 63–78.

- Higgins, H.G. (1966) Two new mites of the genus *Aeroppia* (Opplidae: Oribatei: Acarina). *Proceedings of the Biological Society of Washington*, 68: 106–108.
- Mahunka, S. (1978) Neue und interessante Milben aus dem Genfer Museum. XXIV. First contribution to the oribatid fauna of the Dominican Republic (Acari: Oribatida). *Redia*, 61: 551–564.
- Niedbala, W. (2004) Ptyctimous mites (Acari, Oribatida) of the Neotropical Region. *Annales Zoologici*, 54: 1–288.
- Niedbala, W., Bakowski, M., Kaczmarek, S., Starý, J., Witaliński, W. & Skoracki, M. (2023) A new and some interesting species of ptyctimous mites (Acari, Oribatida) from different countries of the all worldly zoogeographical regions. *Systematic and Applied Acarology*, 28: 364–393. DOI: [10.11158/saa.28.2.17](https://doi.org/10.11158/saa.28.2.17)
- Norton, R.A. & Ermilov, S.G. (2017) Identity of the oribatid mite *Oribata curva* and transfer to *Trichogalumna* (Acari, Oribatida, Galumnidae), with discussion of nomenclatural and biogeographical issues in the ‘*curva*’ species-group. *Zootaxa*, 4272: 551–564. DOI: [10.11646/zootaxa.4272.4.4](https://doi.org/10.11646/zootaxa.4272.4.4)
- Perez-Gelabert, D.E. (2008) Arthropods of Hispaniola (Dominican Republic and Haiti): A checklist and bibliography. *Zootaxa*, 1831: 1–530. DOI: [10.11646/zootaxa.1831.1.1](https://doi.org/10.11646/zootaxa.1831.1.1)
- Pérez-Íñigo, C. & Baggio, D. (1986) Oribates édaphiques du Brésil (III). Oribates de l’Île du «Cardoso» (deuxième partie). *Acarologia*, 27: 163–179.
- Pérez-Íñigo, C. & Baggio, D. (1991) Oribates édaphiques du Brésil (VI). Oribates de l’État de São Paulo (troisième partie). *Acarologia*, 32: 79–92.
- Pfingstl, T., Bardel-Kahr, I. & Schäffer, S. (2023) The Caribbean intertidal mite *Alismobates inexpectatus* (Acari, Oribatida), an unexpected case of cryptic diversity? *Organisms Diversity and Evolution*, 23: 811–832. DOI: [10.1007/s13127-023-00624-9](https://doi.org/10.1007/s13127-023-00624-9)
- Pfingstl, T., Lienhard, A., Baumann, J. & Koblmüller, S. (2021) A taxonomist’s nightmare – Cryptic diversity in Caribbean intertidal arthropods (Arachnida, Acari, Oribatida). *Molecular Phylogenetics and Evolution*, 163: 107240. DOI: [10.1016/j.ympev.2021.107240](https://doi.org/10.1016/j.ympev.2021.107240)
- Subías, L.S. (2022) Listado sistemático, sinonímico y biogeográfico de los ácaros oribátidos (Acariformes, Oribatida) del mundo (excepto fósiles). *Monografías Electrónicas Sociedad Entomológica Aragonesa*, 12: 1–539.
- Subías, L.S. (2024) Listado sistemático, sinonímico y biogeográfico de los ácaros oribátidos (Acariformes: Oribatida) del mundo (excepto fósiles), 19ª actualización, 1–545. Available from: http://bba.bioucm.es/cont/docs/RO_1.pdf (Accessed in January 2024).
- Subías, L.S. & Shtanchaeva, U.Ya. (2021) Contribución al conocimiento de la distribución de los ácaros oribátidos (Acari, Oribatida) tropicales. *Revista Ibérica de Aracnología*, 38: 69–80.

COPYRIGHT



Ermilov. Persian Journal of Acarology is under a free license. This open-access article is distributed under the terms of the Creative Commons-BY-NC-ND which permits unrestricted non-commercial use, distribution, and reproduction in any medium, provided the original author and source are credited.

نهان سفتیان (Acari, Oribatida) جزیره سائونا، جمهوری دومینیکن

سرگی جی. ارمیلوف

دانشگاه تیومن، مؤسسه زیست‌شناسی زیست‌محیطی و کشاورزی (X-BIO)، تیومن، روسیه؛ رایانامه: ermilovacari@yandex.ru

چکیده

سی و چهار گونه کنه اوریباتید (Oribatida)، متعلق به ۲۹ جنس و ۱۴ خانواده، از جزیره سائونا، جنوب شرق جمهوری دومینیکن جمع‌آوری شد. گونه جدیدی از جنس *Pergalumna* - *P. (Pergalumna) saonaensis* sp. nov. - از بستر برگ جنگل مخلوط توصیف می‌شود.

واژگان کلیدی: زیباگان، ریخت‌شناسی، منطقه نئوتروپیکال، گزارش جدید، *Pergalumna*، آرایه‌شناسی.

اطلاعات مقاله: تاریخ دریافت: ۱۴۰۳/۴/۲۴، تاریخ پذیرش توسط / جوهرچی: ۱۴۰۳/۵/۲۵، تاریخ چاپ: ۱۴۰۳/۷/۲۴